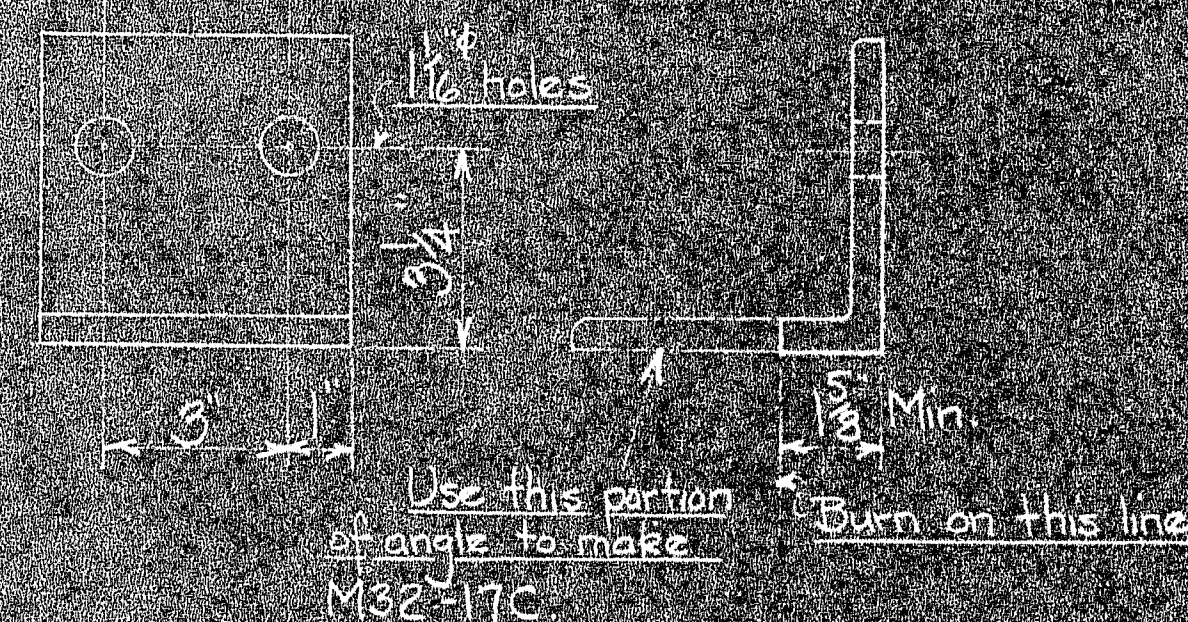
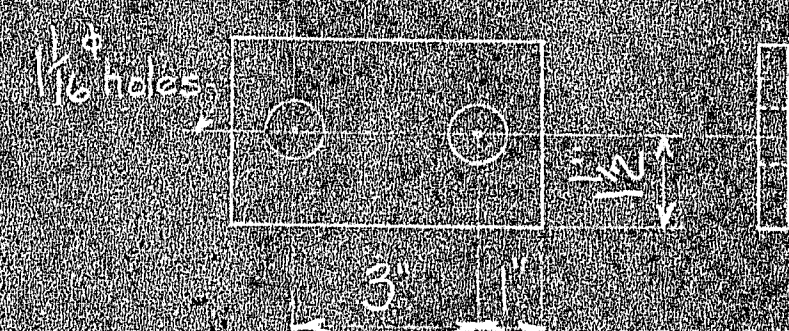


M32-17A - ANGLE



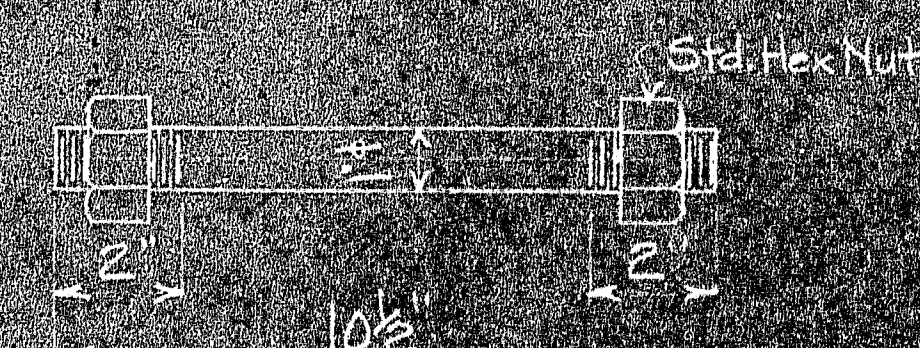
M32-17B - ANGLE

Make from 5x5x1/2x0-5. - See note above.

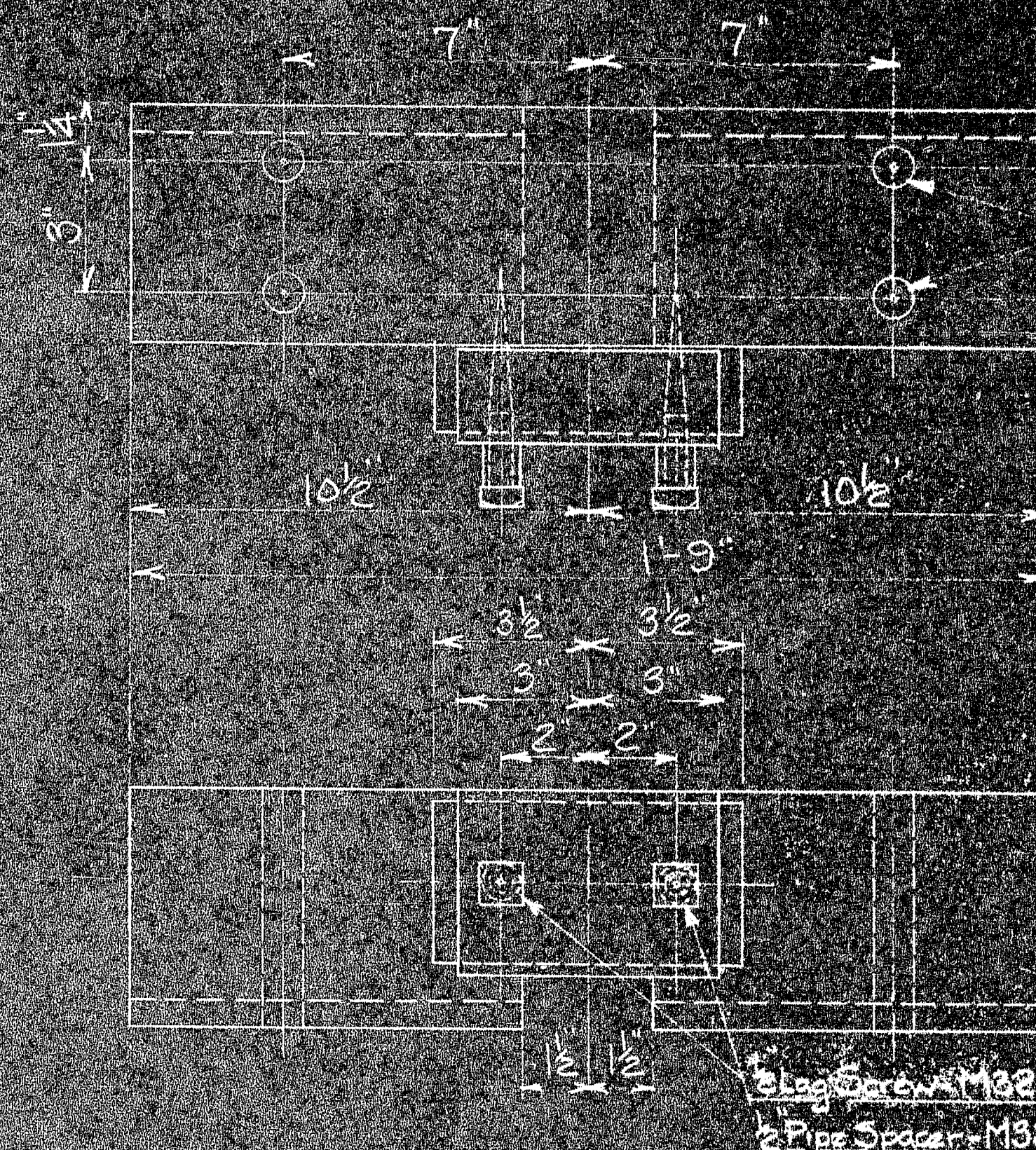


M32-17C - PLATE

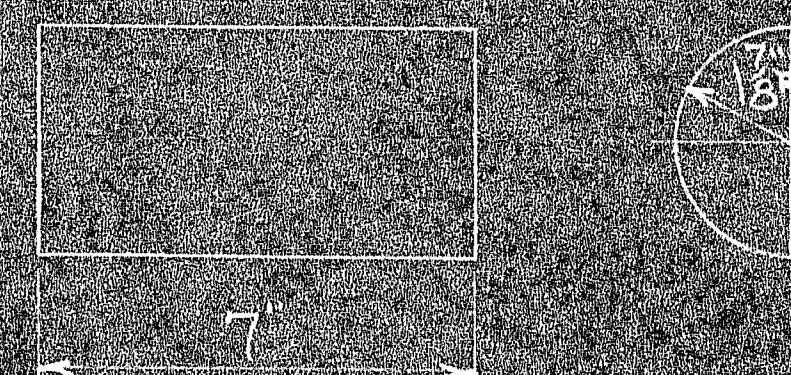
Make from piece of M32-17B (See detail)



M32-17D - BAR BOLT

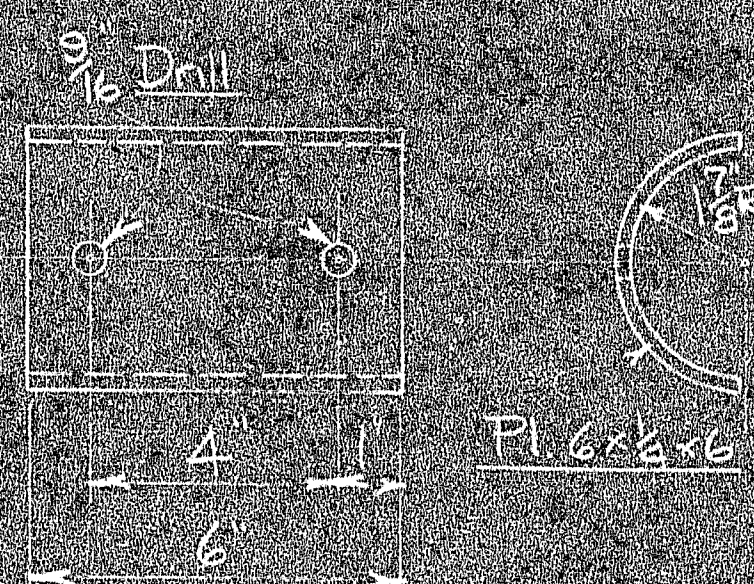


M32-17E - TIMBER



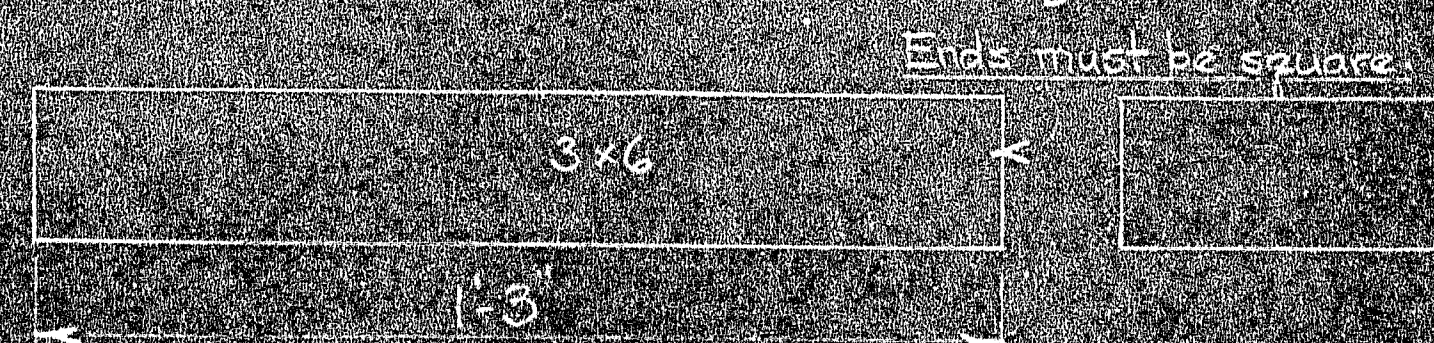
M32-17F - TIMBER

See M32-17E for assembly

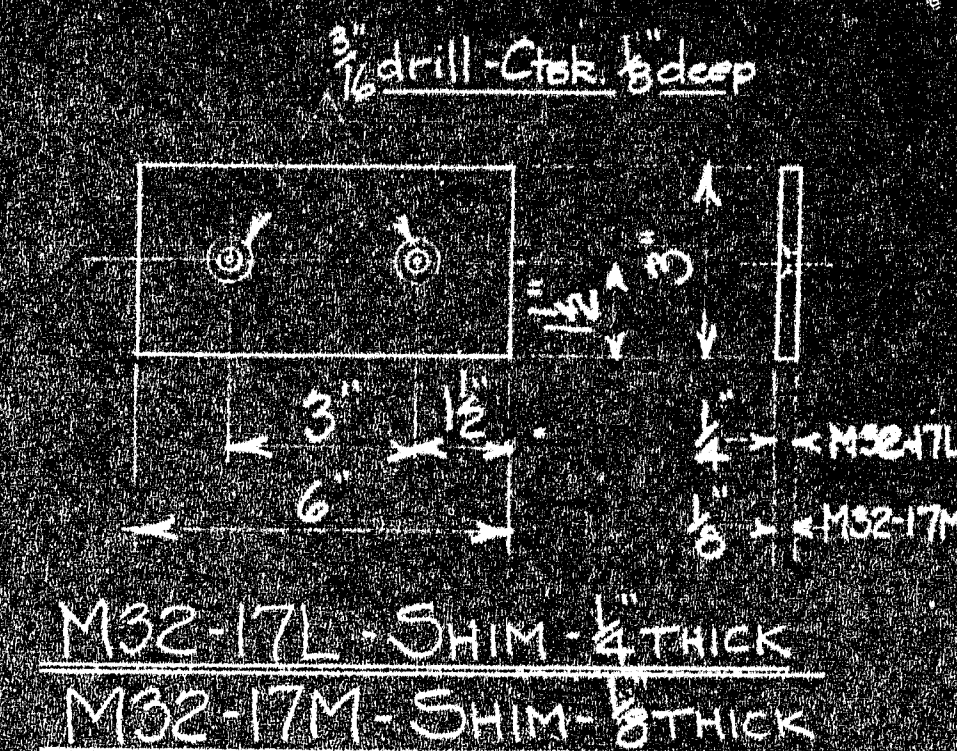


M32-17G BENT PLATE

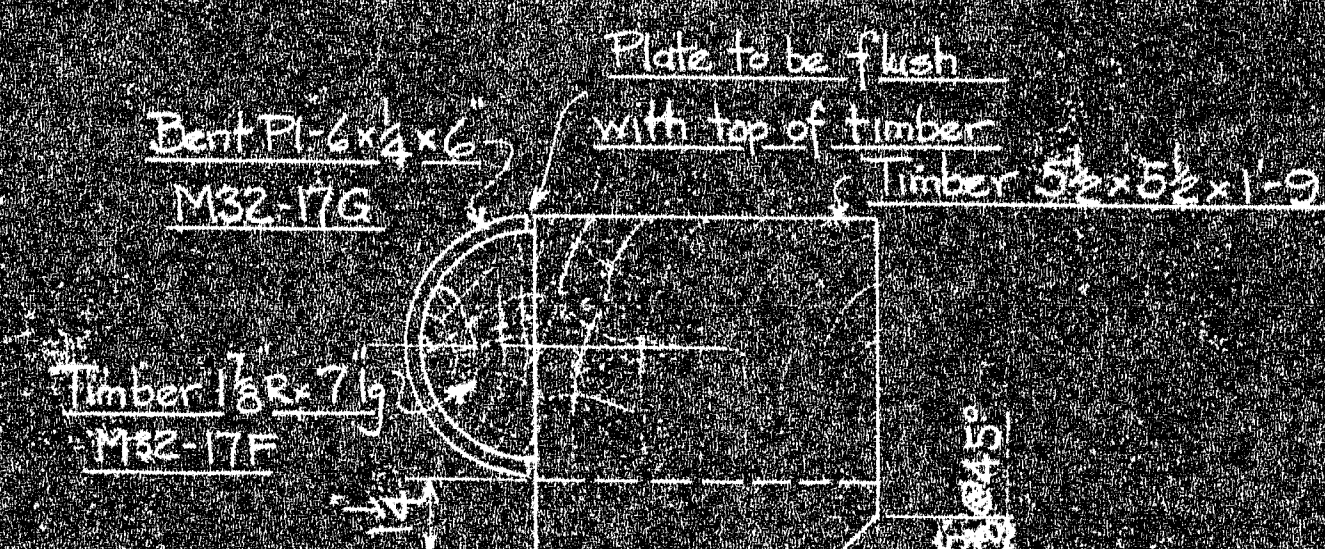
See M32-17E for assembly



M32-17H - TIMBER



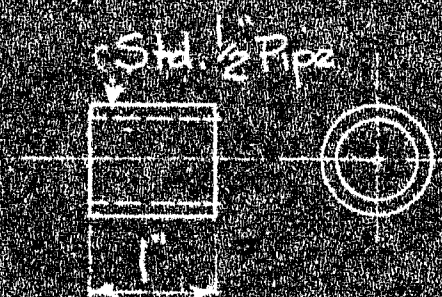
M32-17L - SHIM - 1/4 THICK
M32-17M - SHIM - 3/8 THICK



M32-17G BENT PLATE



M32-17F TIMBER



M32-17J - PIPE SPACER

M32-17M	120	Steel	53/13	Shim	
M32-17L	120	Steel	53/13	Shim	
M32-17K	250	-	53/11-13	1/2 Lag Screw - 5" lg.	
M32-17J	240	Pipe	53/13	Pipe Spacer	
M32-17H	60	Y.P.	53/12-13	Timber	
M32-17G	120	Steel	53/10-13	Bent Plate	
M32-17F	120	Y.P.	53/12-13	Timber	
M32-17E	120	Y.P.	53/12-13	Timber	
M32-17D	480	Steel	53/11-13	Bar Bolt	
M32-17C	240	Steel	53/10-13	Plate	See Note
M32-17B	240	Steel	53/10-13	Angle	See Note
M32-17A	120	Steel	53/10-13	Angle	

MARK	REQ'D	MAT'L	REQ. NO.	NAME	REMARKS
BILL OF MATERIAL					
JOHN A. ROEBLING'S SONS CO., TRENTON, N. J.					
DEER ISLE BRIDGE					
TEMPORARY STAYS					
TRUSS CONNECTION DETAILS					
BY	REVISIONS	DATE	SCALE 3'-1'-0"	SERIAL	SHEET
APPROVED			DES. DR. 6-21-13	M32	17
CH. DR.			TR.		
ENG'R.			CH.		

